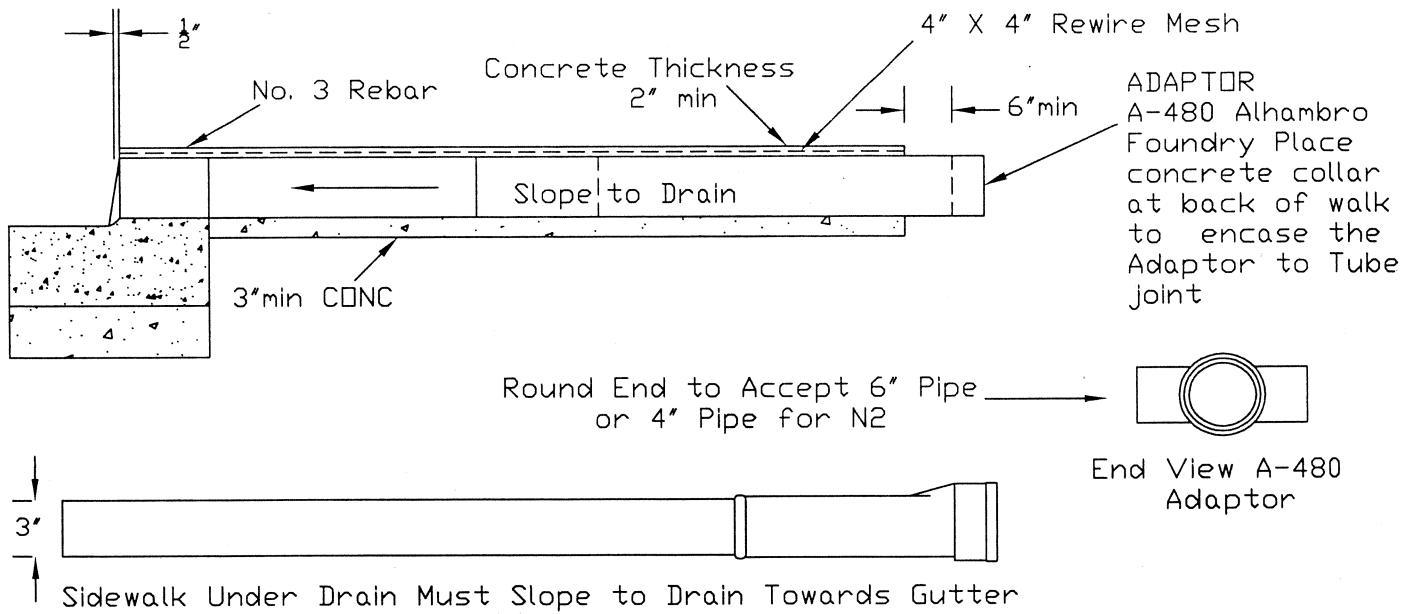


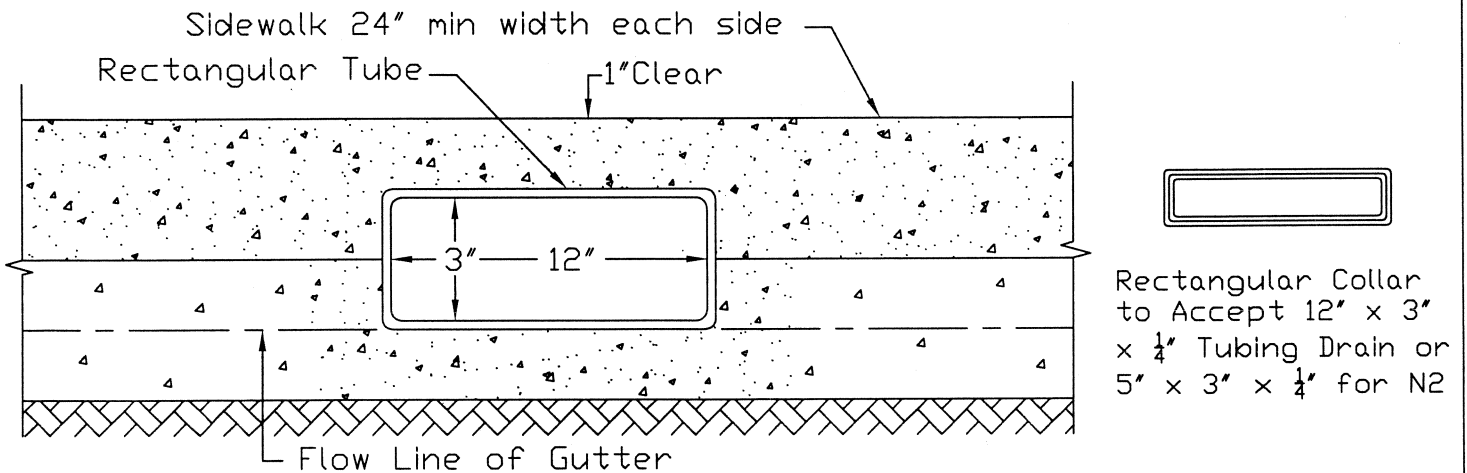
Rectangular steel tube Galv. 3" X 12" x 1/4" wall A36 Structural tubing



A36 - 12" X 3" X 1/4" Rectangular Tubing Hot Dip Galvanized to Asim A123 Or 5" x 3" x 1/4" For N2

Cast Iron Adaptor- Alhambra FDRY A480

Option 1



Option 2

Notes:

LONGITUDINAL SECTION

1. No pipe joints shall be within the sidewalk or curb
2. Pipe shall be Cast Iron Tubing

NOT TO SCALE

<b>STANDARD DETAIL</b>	<b>CITY OF BRISBANE</b> ENGINEERING AND CONSTRUCTION	
	<b>CURB DRAIN DETAIL</b>	<b>CD-1</b> SHT 1 OF 1
DATE: 07/16/07		