

Building B and C Connector Project

1400-1600 SIERRA POINT, BRISBANE, CALIFORNIA

PLANNING SUBMITTAL

MAY 3, 2019



SHEET INDEX

- A1 CAMPUS SITE PLAN
- A2 FLOOR PLANS
- A3 NORTH ELEVATIONS (ENTITLED + PROPOSED)
- A4 SOUTH ELEVATIONS (ENTITLED + PROPOSED)
- A5 ENLARGED CONNECTION ELEVATIONS
- A6 SECTIONS
- A7 PROPOSED PERSPECTIVES
- A8 ENTITLED PERSPECTIVES

- L1 CONCEPTUAL LANDSCAPE PLAN

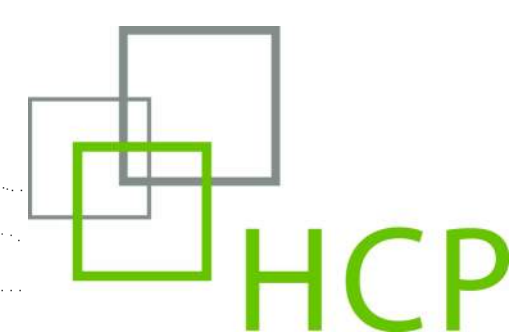
GRAPHICS PACKAGE (attached)

- 1 COLORED SITE PLAN
- 2 ENTITLED NORTH VIEW
- 3 PROPOSED NORTH VIEW
- 4 ENTITLED VIEW FROM SHORLINE CT
- 5 PROPOSED VIEW FROM SHORLINE CT
- 6 ENTITLED VIEW FROM SIERRA POINT PKWY
- 7 PROPOSED VIEW FROM SIERRA POINT PKWY

PROJECT DATA

Zoning: SP-CRO Sierra Point Commercial District

Site Area:	22.85 Acres (995,172 SF)
Building Areas:	
Previously approved Camps (Bldgs A-E):	540,185 SF
Proposed Conector between Bldgs B and C:	20, 904 SF (6,968 SF/level)
Total Campus SF with Proposed Connector:	561,089 SF
FAR:	0.56
Parking Provided:	1,760 cars (50% compact)
Proposed Parking Ratio:	1 / 318



1600 SIERRA POINT

BRISBANE, CA 94005

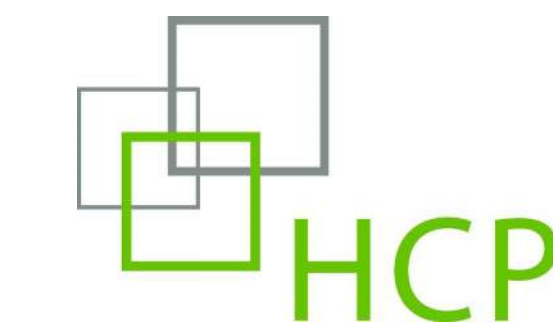
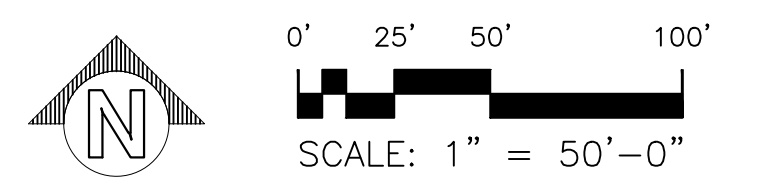
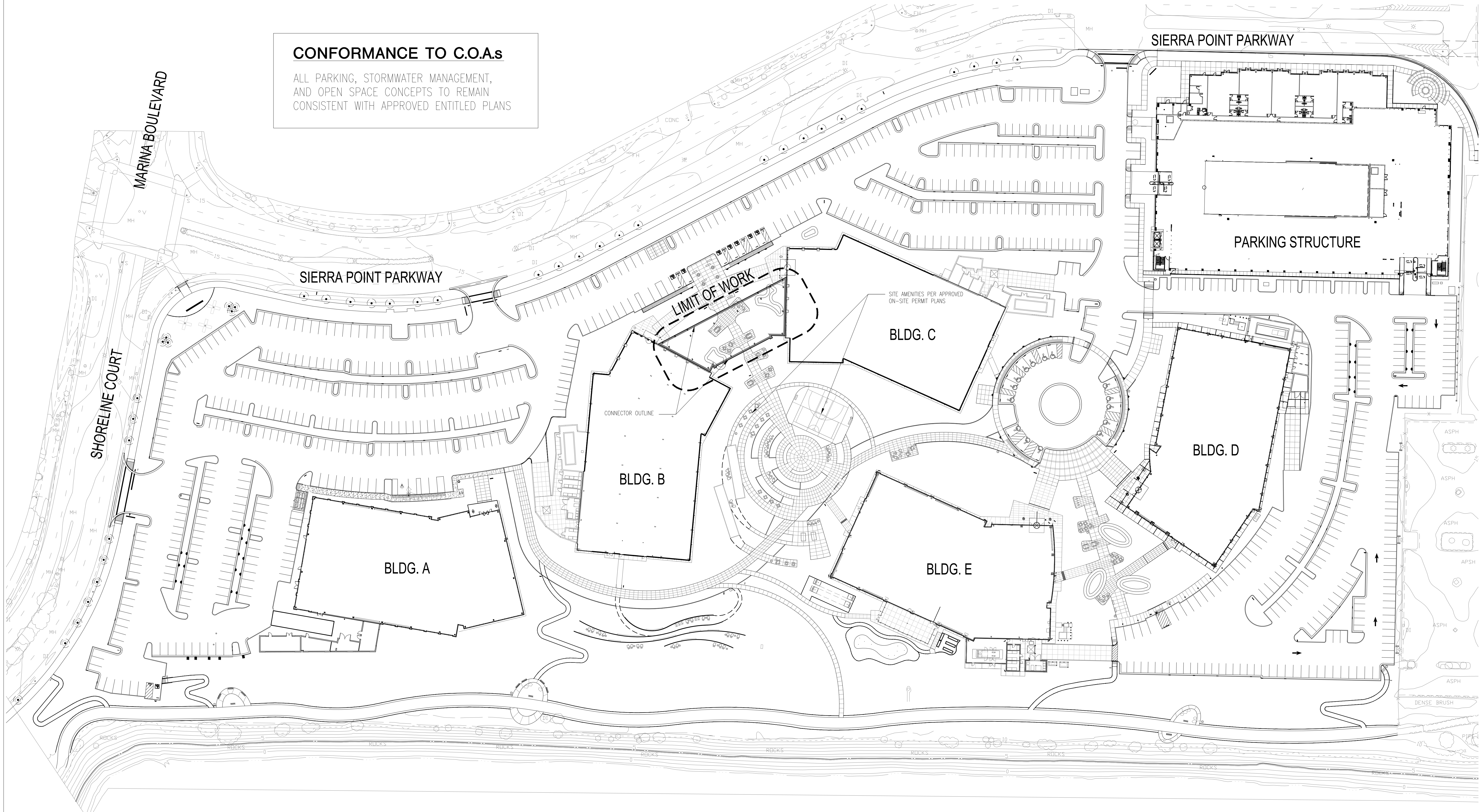
PLANNING SUBMITTAL

COVER SHEET

06/07/2019



CONFORMANCE TO C.O.A.s
 ALL PARKING, STORMWATER MANAGEMENT,
 AND OPEN SPACE CONCEPTS TO REMAIN
 CONSISTENT WITH APPROVED ENTITLED PLANS



SIERRA POINT
 1000 SIERRA POINT PARKWAY, BRISBANE, CA

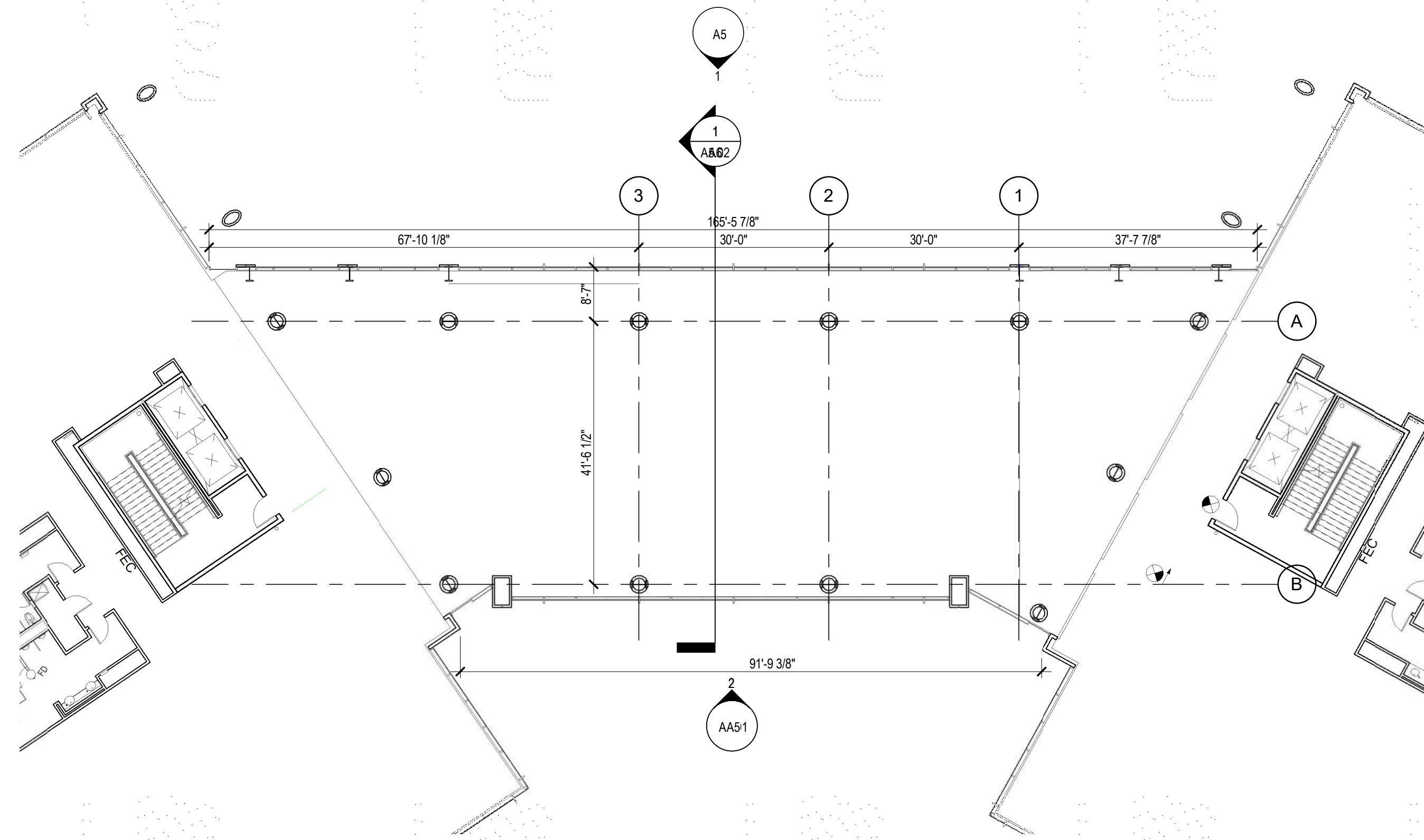
PLANNING SUBMITTAL

CAMPUS SITE PLAN

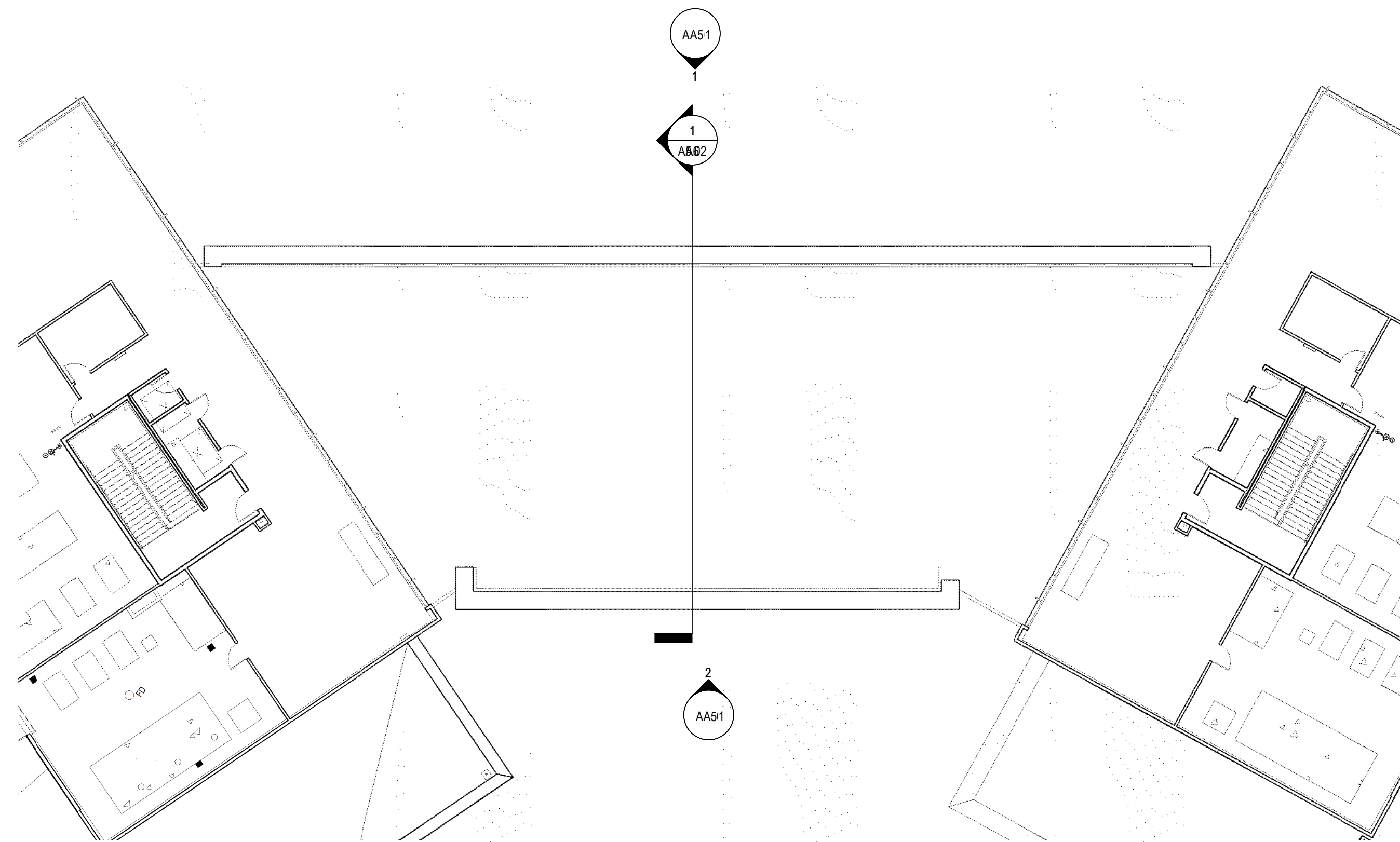
06/07/2019

A1

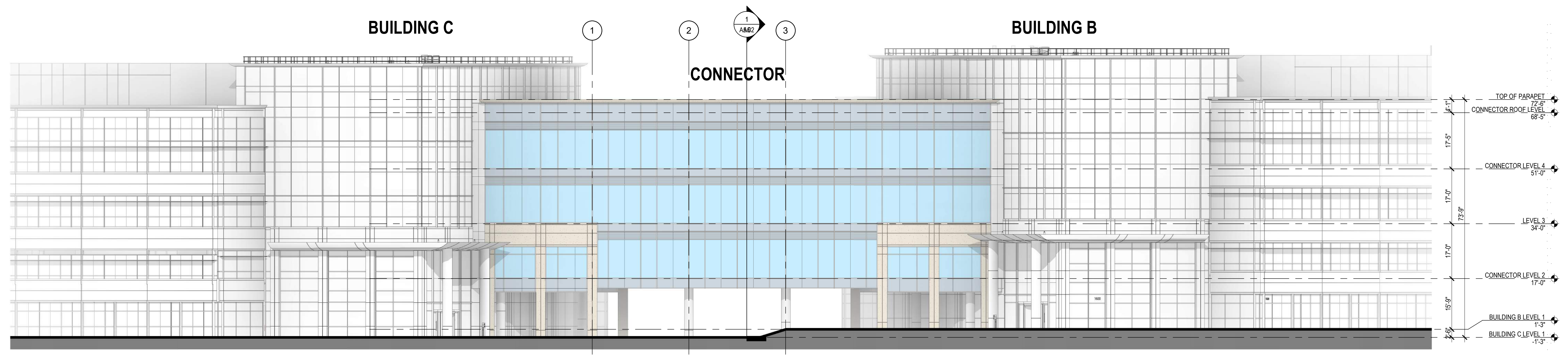




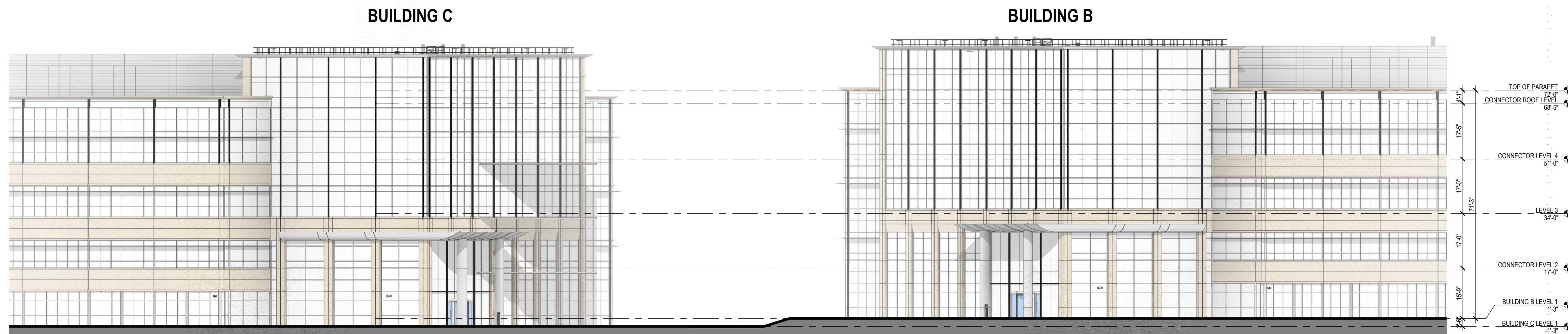
① LEVEL 2, 3 +4
1/16" = 1'-0"



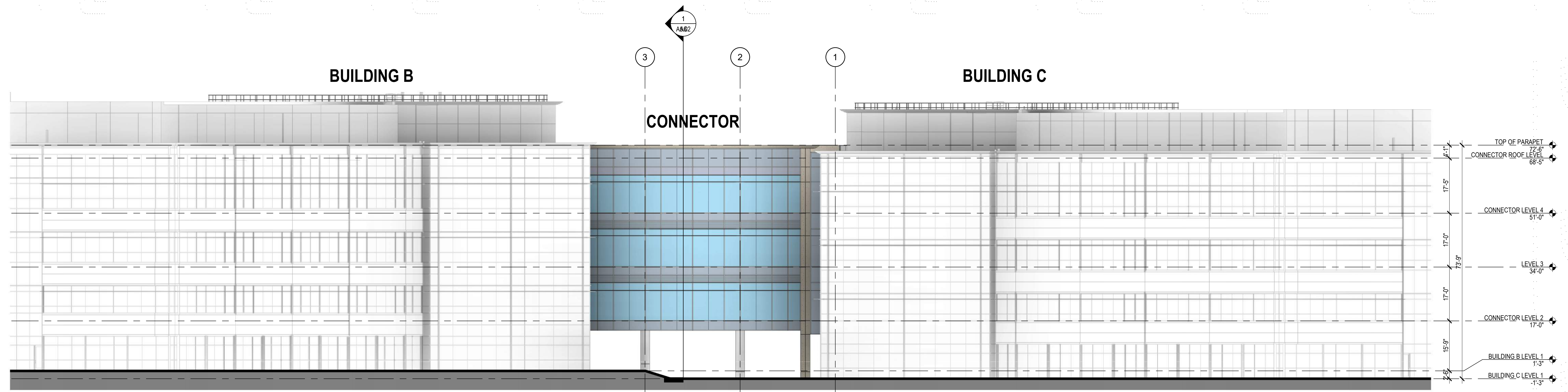
② ROOF PLAN
1/16" = 1'-0"



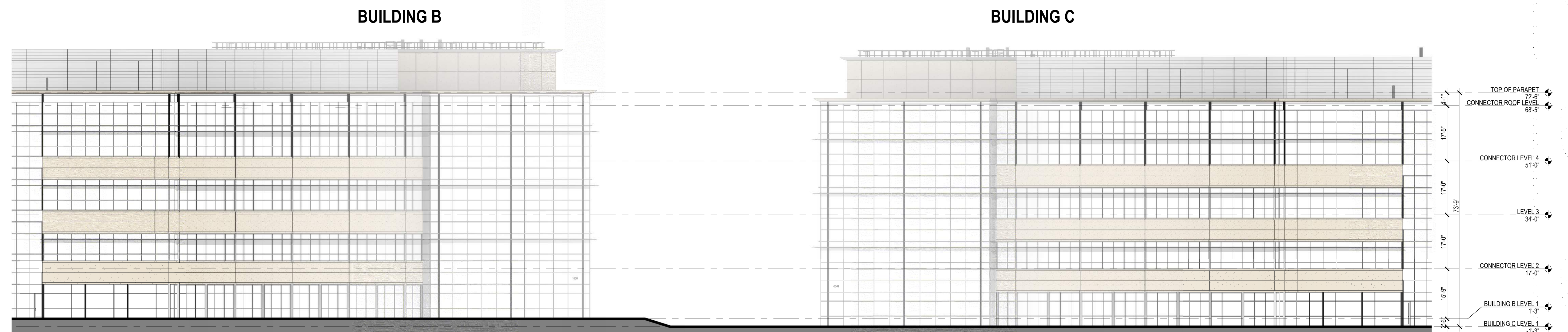
1 PROPOSED CONNECTION - NORTH ELEVATION
1/16" = 1'-0"



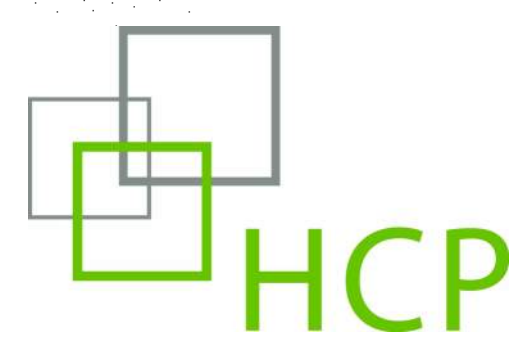
2 APPROVED PROJECT - NORTH ELEVATION1
1/16" = 1'-0"



2 PROPOSED CONNECTION - SOUTH ELEVATION
1/16" = 1'-0"



1 APPROVED PROJECT - SOUTH ELEVATION1
1/16" = 1'-0"



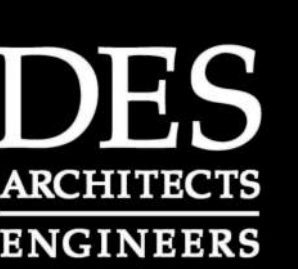
1600 SIERRA POINT
BRISBANE, CA 94005

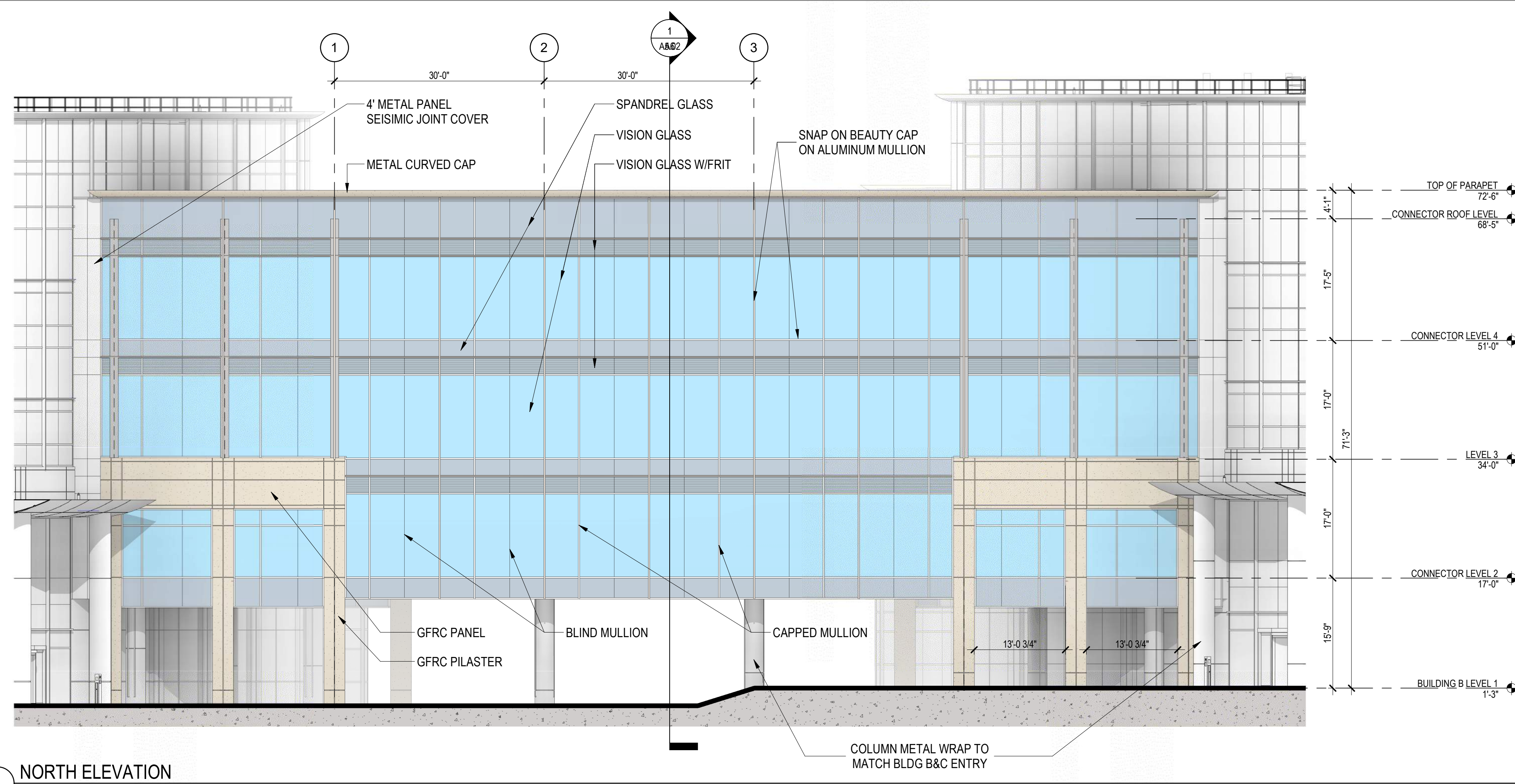
PLANNING SUBMITTAL

SOUTH ELEVATIONS (ENTITLED + PROPOSED)

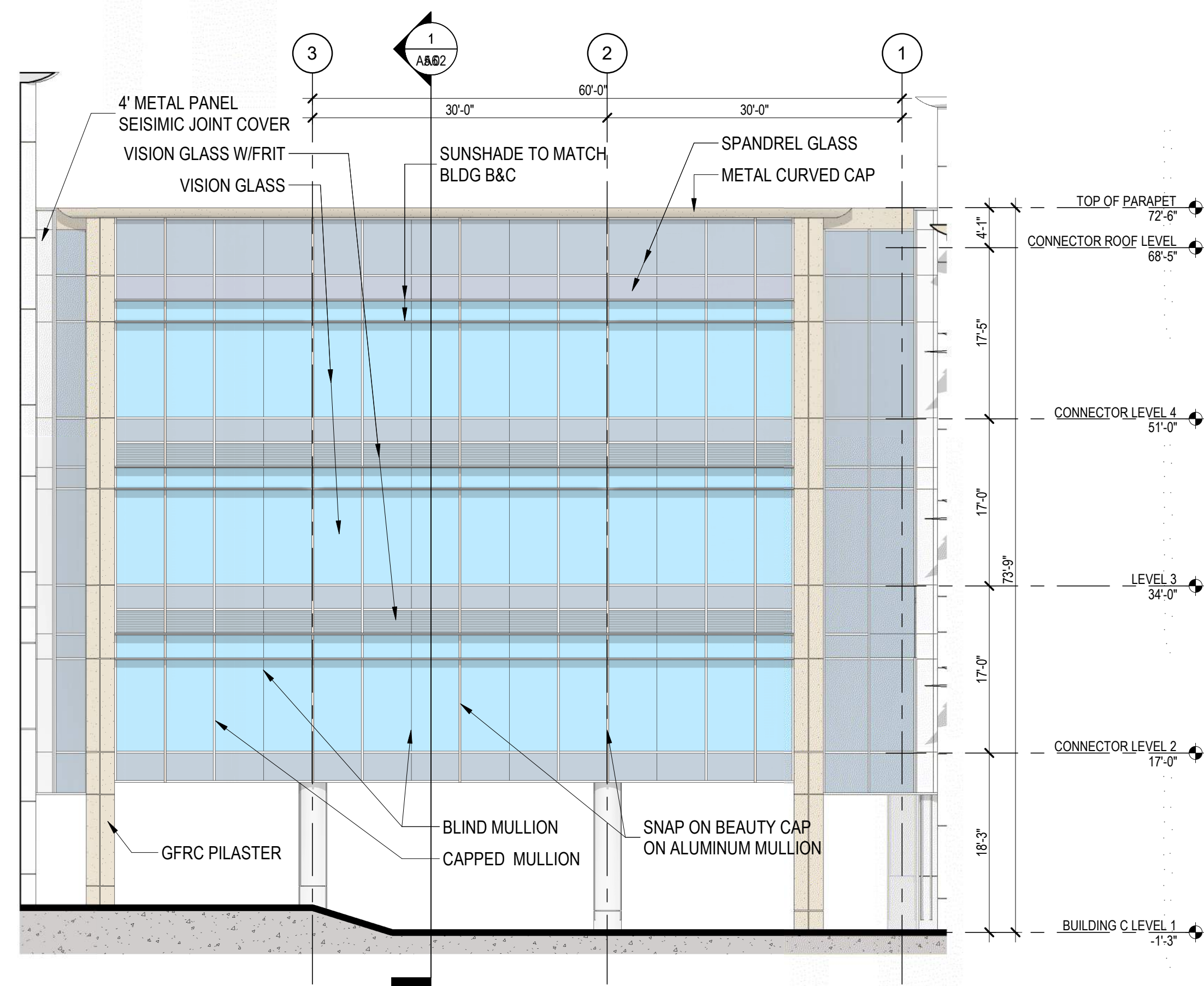
06/07/2019

A4

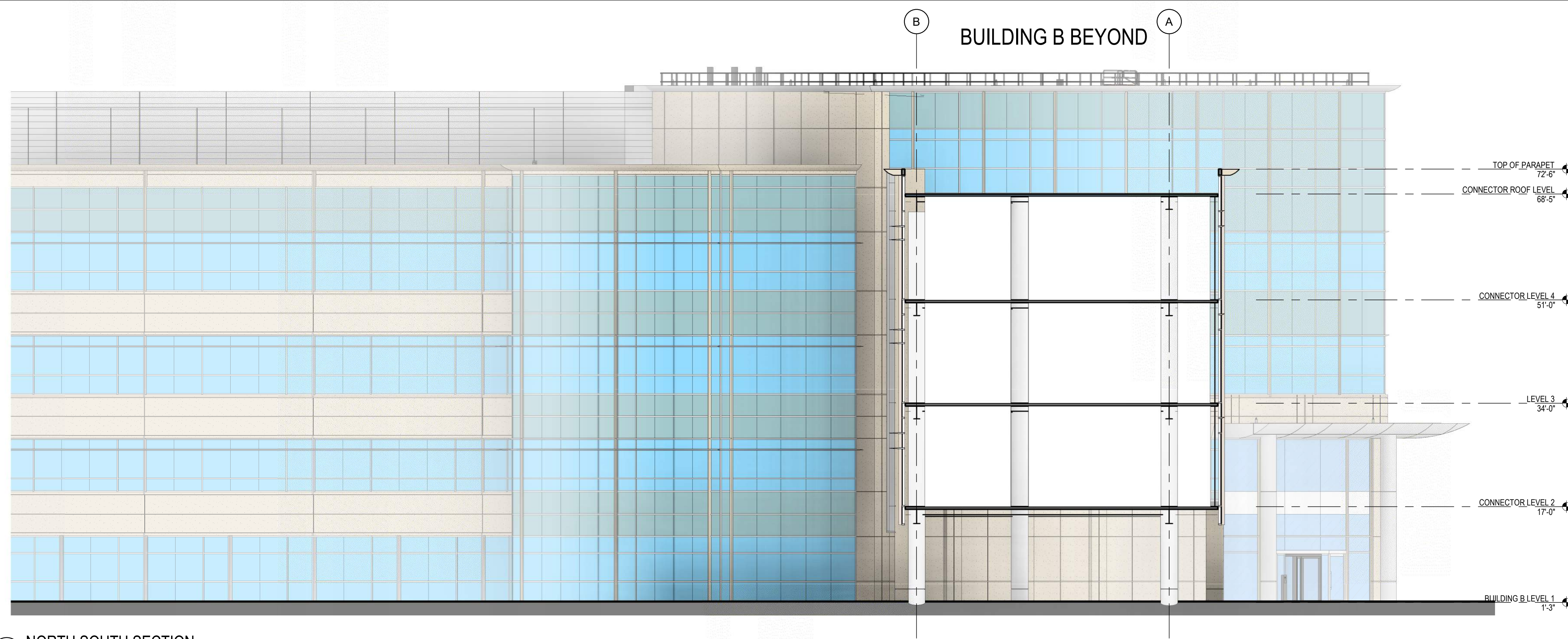




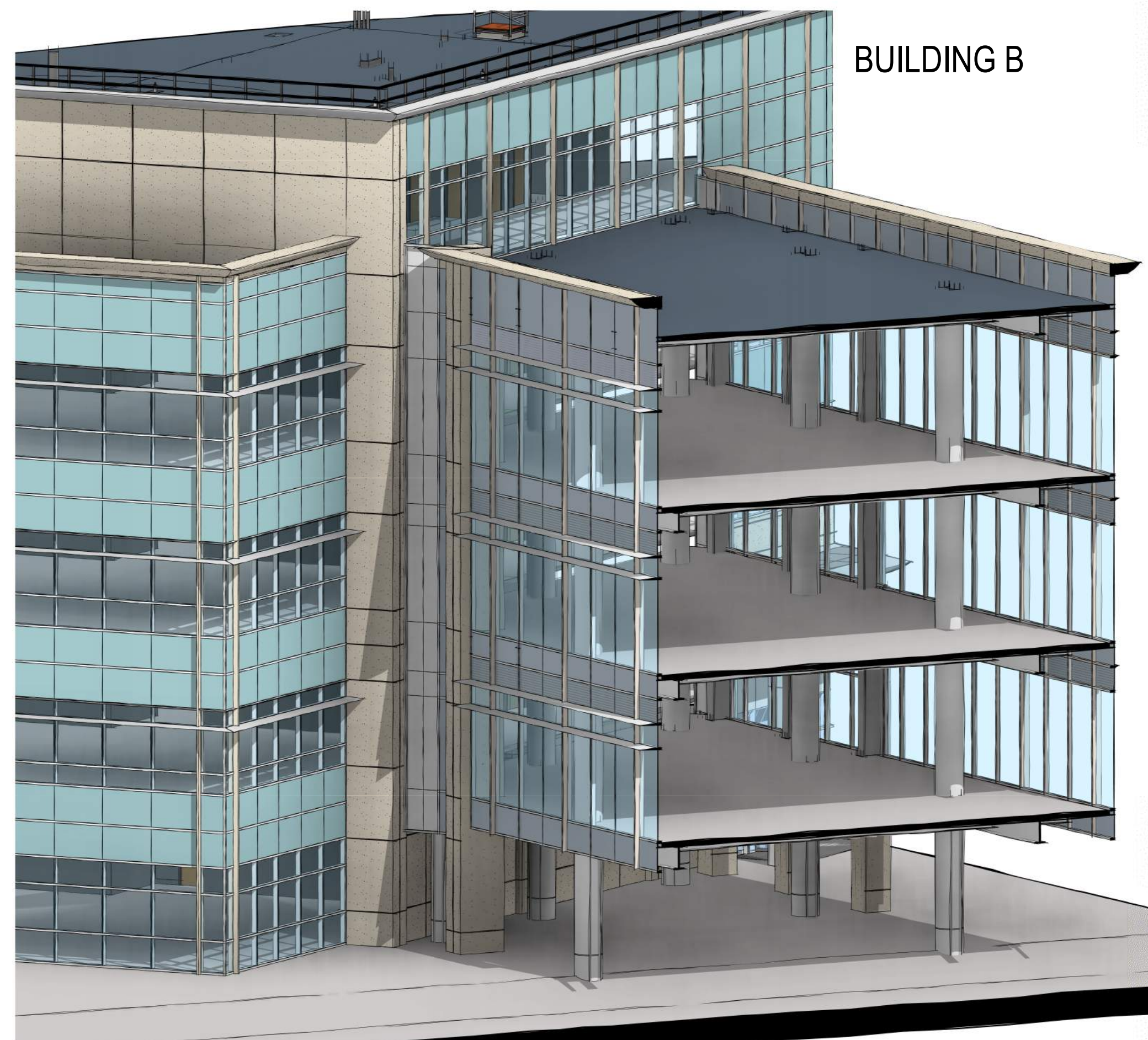
1 NORTH ELEVATION
3/32" = 1'-0"



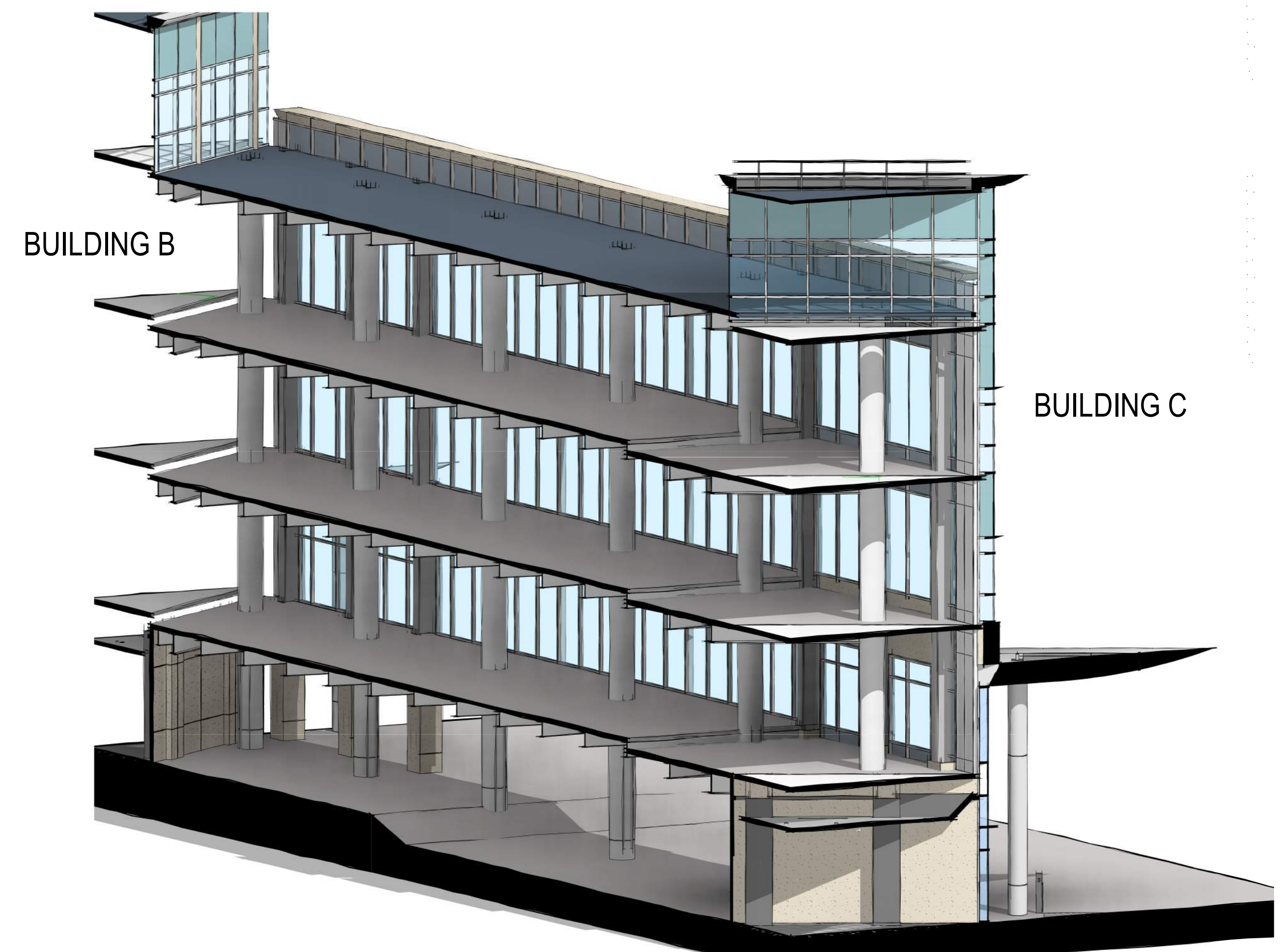
2 SOUTH ELEVATION
3/32" = 1'-0"



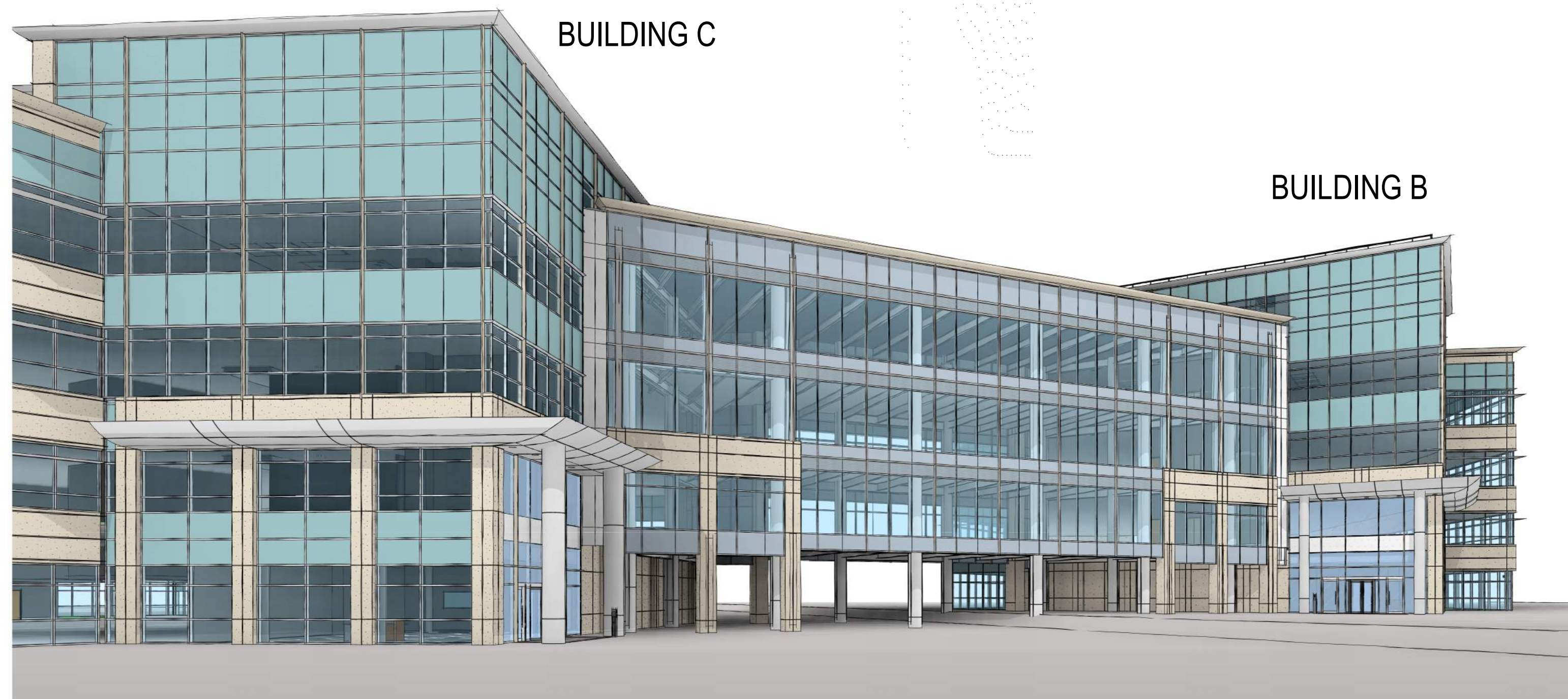
① NORTH SOUTH SECTION
3/32" = 1'-0"



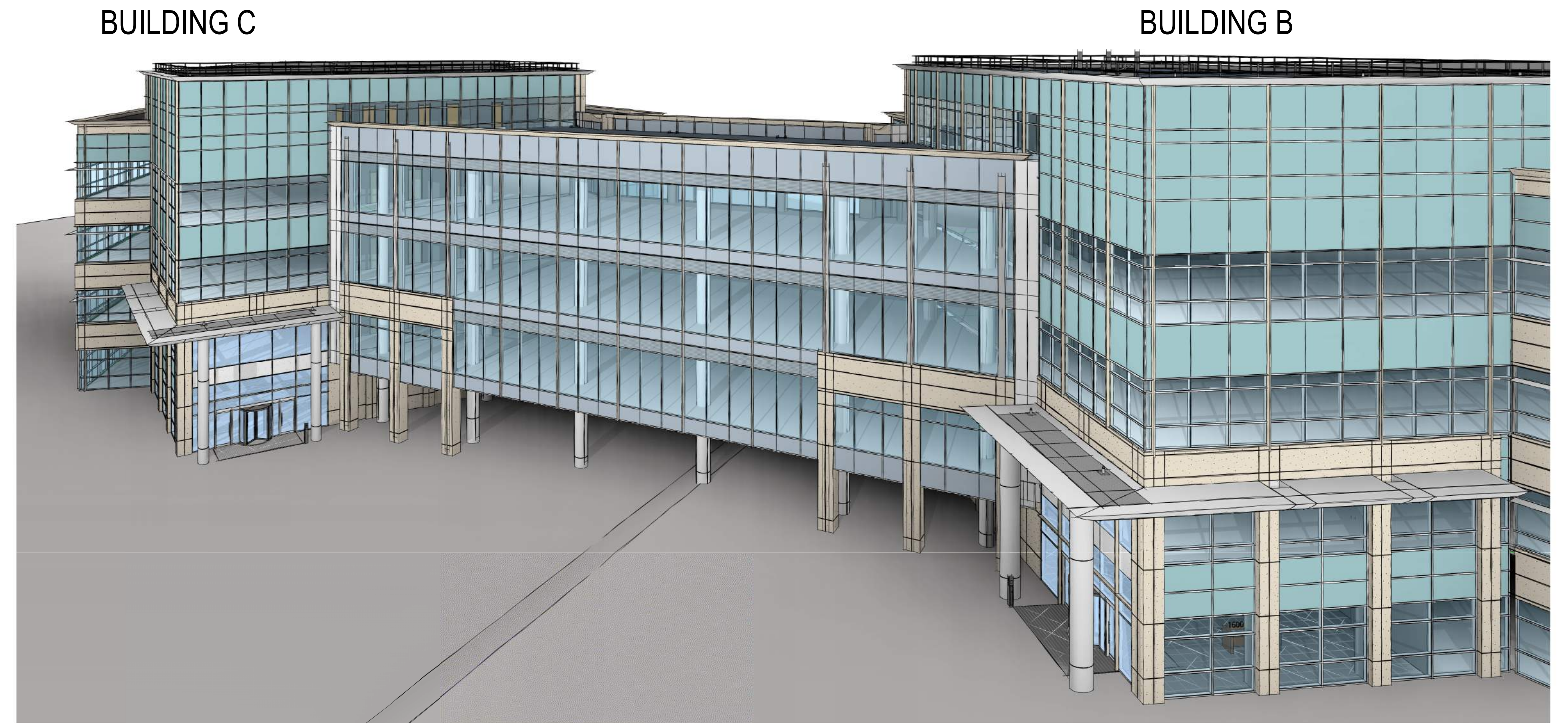
② SECTION NORTH-SOUTH



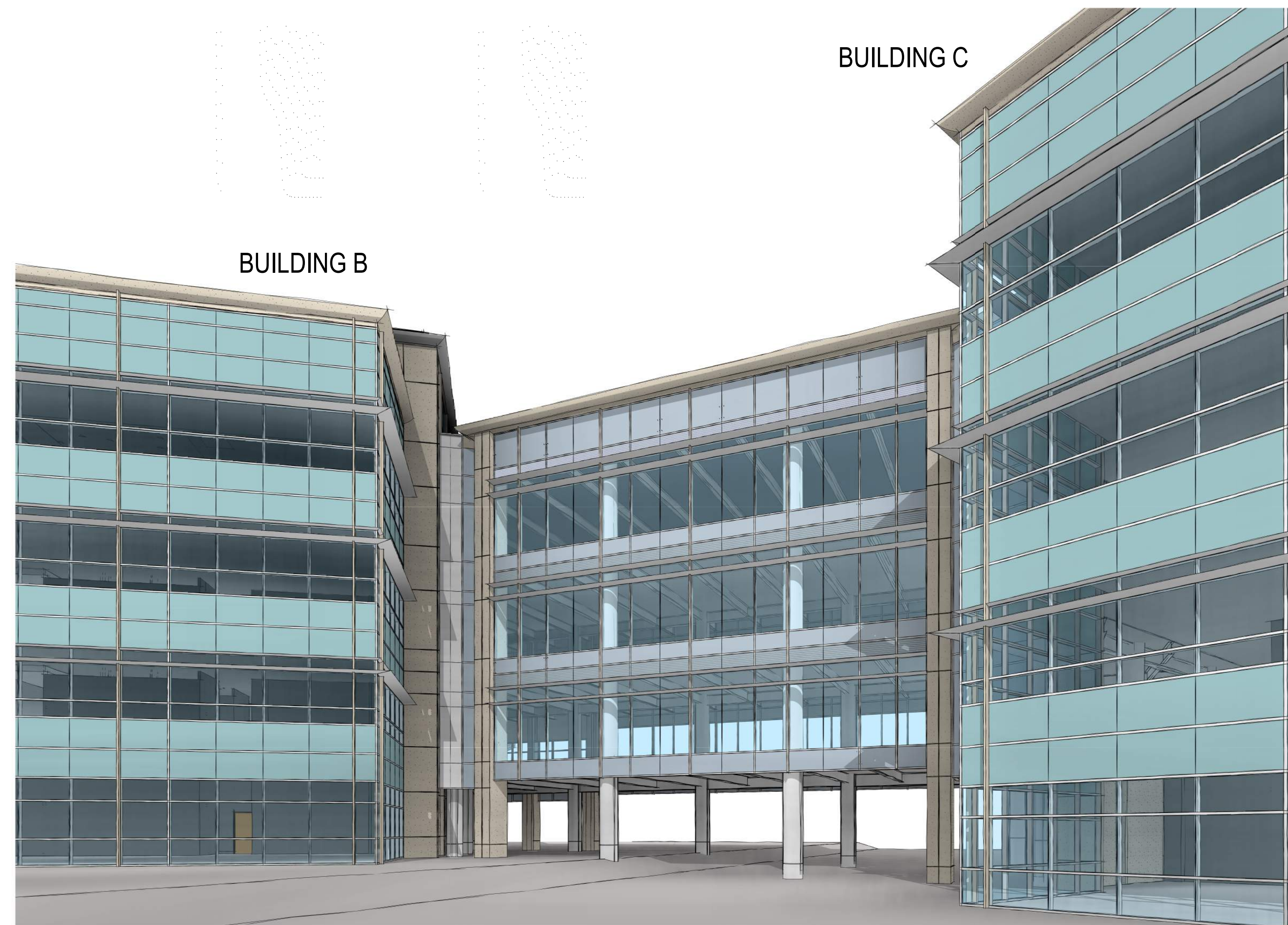
③ SECTION EAST-WEST



1 VIEW OF NORTH FACADE



2 VIEW OF NORTH FACADE



3 VIEW OF SOUTH FACADE

