

Public Space and Recreation Uses at the Baylands

Planning
Commission
Meeting

February 5, 2009



Vision

“The Baylands as a hallmark for sustainability and green development with a mix of active uses and extensive open space”



Guiding Principles

- Large amounts of open space and recreation south of Visitation Creek
- Sustainability as a foundation for development and open space
- Wetlands restoration along creek and lagoon
- Development that provides community amenities and regional attraction
- Maintain views to the Bay
- A connected place via pedestrian, bicycle, and enhanced vehicle connectivity



Primary Features & Opportunities

- Lagoon
- Visitation Creek
- Icehouse Hill
- Historic buildings
 - Roundhouse
 - Packing house
 - Schlage office
- Bay Trail



Constraints

- Freeway noise
- Wind
- Separation from community & hills
- Views of Tanks
- Lagoon shoreline
- Contamination & settling



Our Approach

- Five Categories – Information Gathering
 1. Technical issues
 2. Environmental issues
 3. Aesthetic
 4. Social
 5. Financial



Our Approach

- Direct Council, Commission, and Public Inputs
 - Obtain inputs
 - Explore ideas
 - Hear from the public
 - Parks, Beaches & Recreation-Feb 4 6:00 p.m.
 - Planning Commission-Feb 5 7:30 p.m.
 - Open Space & Ecology-Feb 11 7:00 p.m.



Regional Ecology and Connections





Mitigation Opportunities

Noise
Wind
Tank Views
Separation

Lagoon
Settling
Contamination

Habitat Potentials



Habitat Potentials



Habitat Potentials

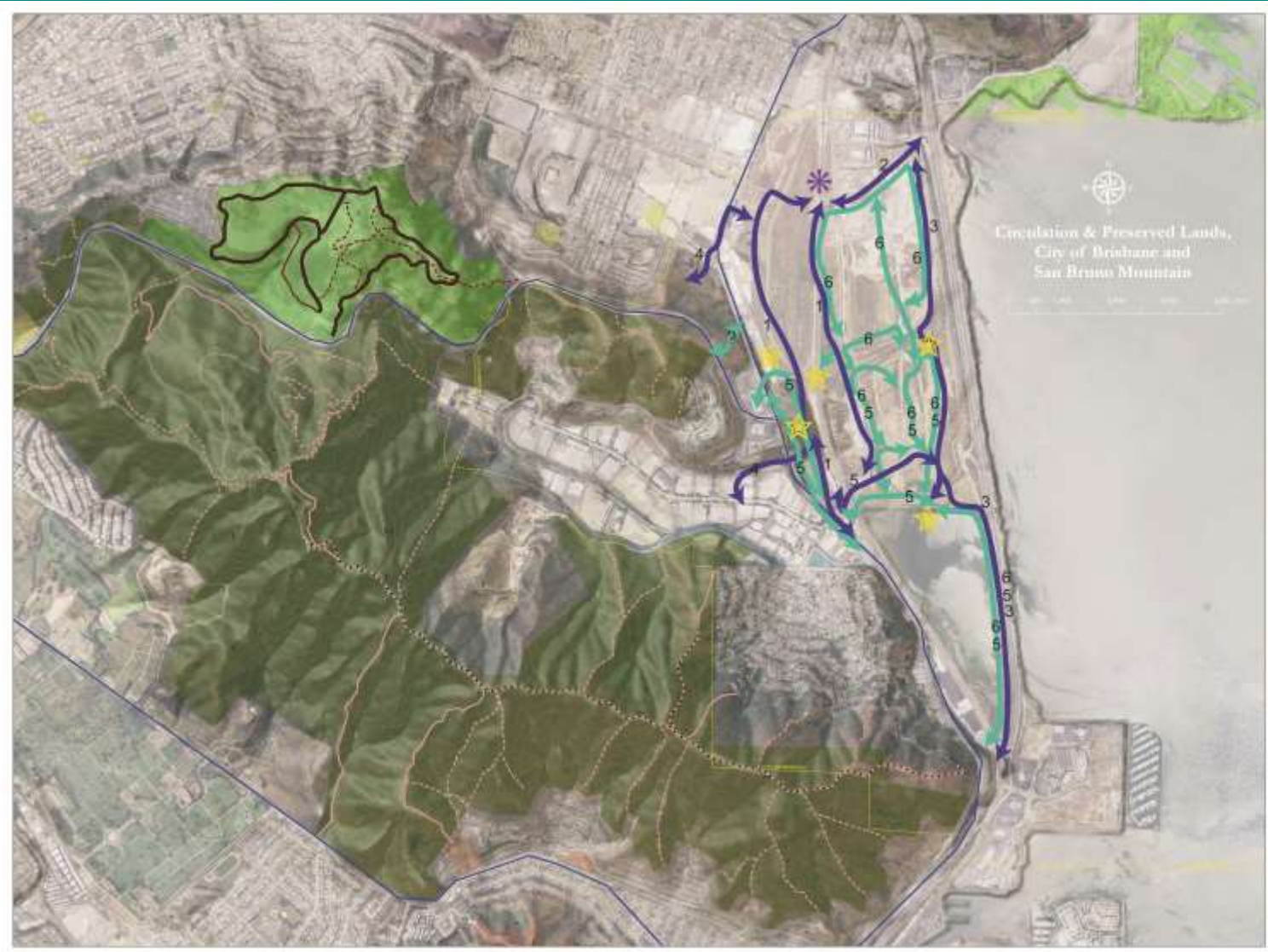


Primary Features



Potential Use Envelopes





Conceptual Circulation

-  Pedestrian Connections
-  Bicycle Connections
-  Point of Interest
-  Rail Station

1. Community to Transit Hub
2. Transit Hub to Existing Industrial Park
3. Bay Trail with Alternate Side Trips
4. Mountain Bike - Transition to Mountains
5. Community to & within Recreation Areas
6. New Development to & within Recreation Areas

Land Owner Agency

-  Brisbane
-  California Department of Parks and Recreation
-  San Mateo - Parks and Recreation Dept.

Existing Trails

-  San Mateo Parks & Rec. Path
-  San Mateo Parks & Rec. Dirt Path
-  San Mateo Parks & Rec. Mountain Bike Path
-  CA State Park Path
-  CA State Park Mountain Bike Path
-  Brisbane Existing Trail
-  CA State Park Road San Mateo County
-  Existing Bike Lane or Route

Connectivity



Use & Activity Groupings

Group 1 - Active, large & revenue generating
Golf
* Full course
* Driving range
* 3 hole training course
* Putting greens
* Tennis courts
* Gymnasium & workout facilities
* Indoor ice skating/hockey rink
Full size pool - swimming & diving
Racquetball courts
Group 2 - Active, specialized & youth-oriented
Miniature golf
Go-carts
Skateboard
Roller rink
Climbing wall
Frisbee golf
Group 3 - Less active, adult oriented
Horseshoes
Bocce ball
Lawn bowling
Croquet

Group 4 - Active, team sport oriented
* Full-sized soccer field(s)
* Full-sized baseball field(s)
* Full-sized softball field(s)
* Open field - informal / unstructured play
Full-sized basketball court(s)
Group 5 - Cultural, indoor & outdoor
Botanic garden
Performing arts center
Outdoor amphitheater
Cultural center
Interpretative center
Science/nature center
Library
Children's museum
Ceramics & art studios
Petting zoo
Charter High School

Group 6 - Passive, circulation-oriented
* Walking running track
* Walking/hiking/biking trail(s)
Dog walking trail / dog park
Bay Trail
Combo wildlife & trail corridors
Bike rental center
Equestrian trails (?)
Group 7 - Water oriented space & uses
* Man-made lake with boating
Fishing area
Boat ramp
Kayaks
Beach
Overpass & pier in bay
Lagoon boating
Group 8 - Community parks & habitat
* Children's informal / unstructured play area
Picnic areas
Fountain Park
Wetlands
Restored habitat
Trees for birds
Restored lagoon

* - Uses and activities previously suggested by the PB&R commission

-  Canyons, Lake
-  New Road Alignment
-  Old and Foot Paths
-  Foot Trail
-  Pavement (like Everwood)
-  Bare "Couture"
-  Bare Area
-  Grass Spaces



Input

- Have we captured the general consensus on site envelopes and shapes?
- Do we have the correct circulation pattern?
 - Roadways & entry points
 - Trails
- What types of edges would you like to see?
 - Between Open Space to Recreation
 - Between Public Space and Development
- Should we continue the San Francisco connection & park spaces?

Questions and Comments

Connectivity





