

5
3
1+2

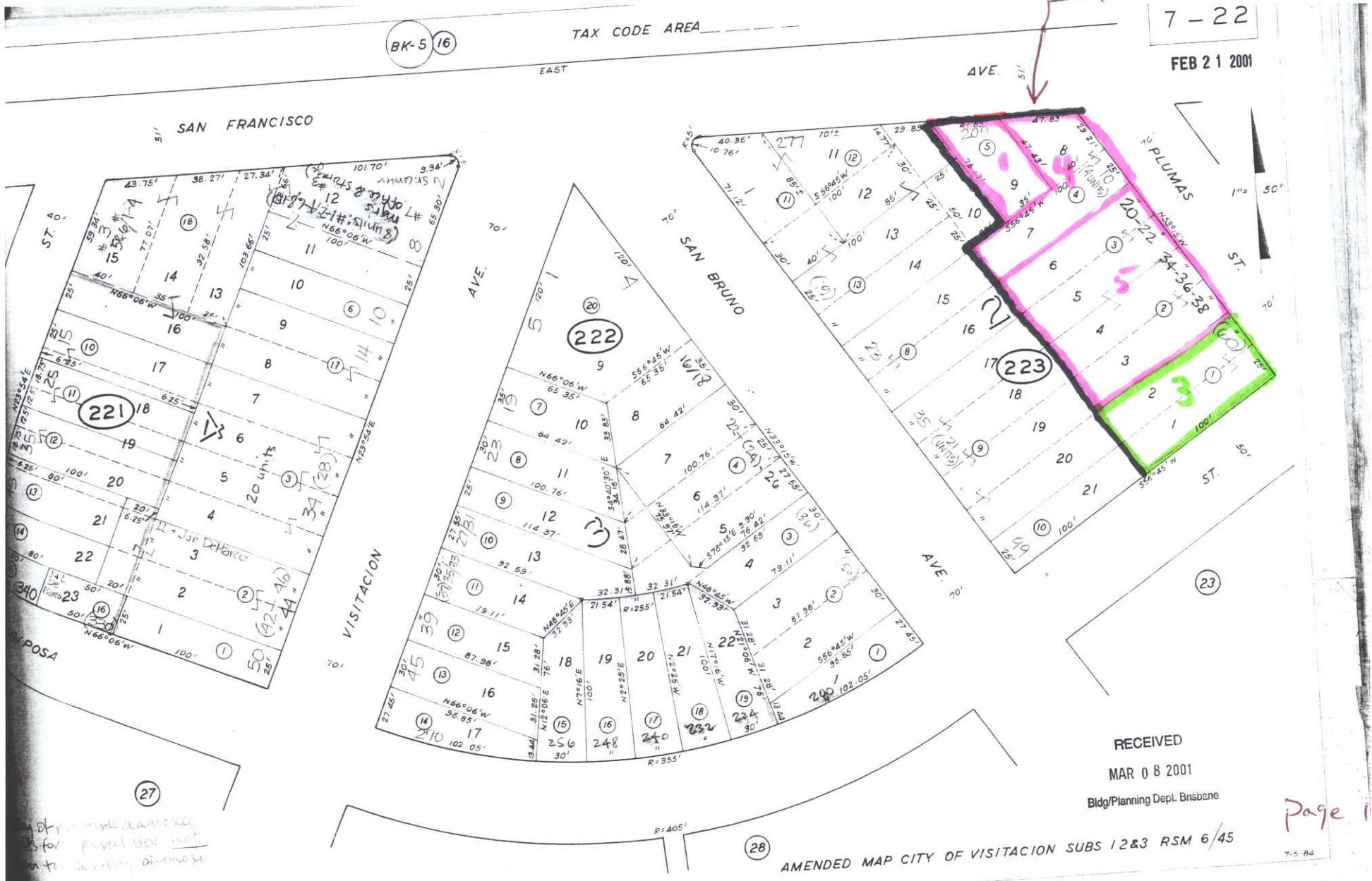
Developed to 20 units/acre or More
(E) 5 units

Vacant (3 units if developed at 20 units/ac.)

Developed site with Infill Potential
(1 existing plus 2 potential)

R-3 Residential District

R-3 Boundary Line



7-22

FEB 21 2001

RECEIVED
MAR 08 2001
Bldg/Planning Dept. Bnsbane

AMENDED MAP CITY OF VISITACION SUBS 12&3 RSM 6/45

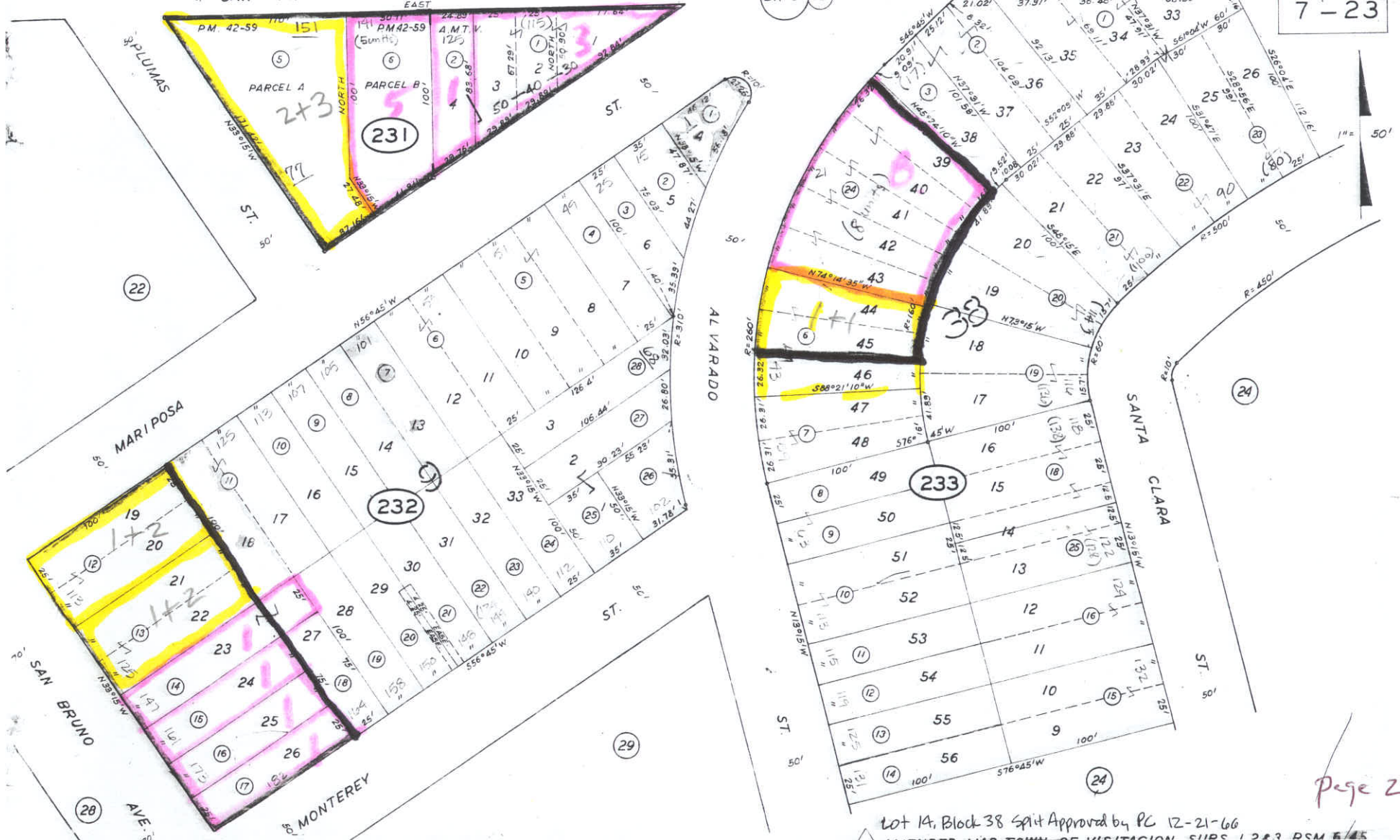
Page 1 of 8

7-5-84

SAN FRANCISCO EAST TAX CODE AREA

BK-5 16

7-23



Lot 14, Block 38 Split Approved by PC 12-21-66

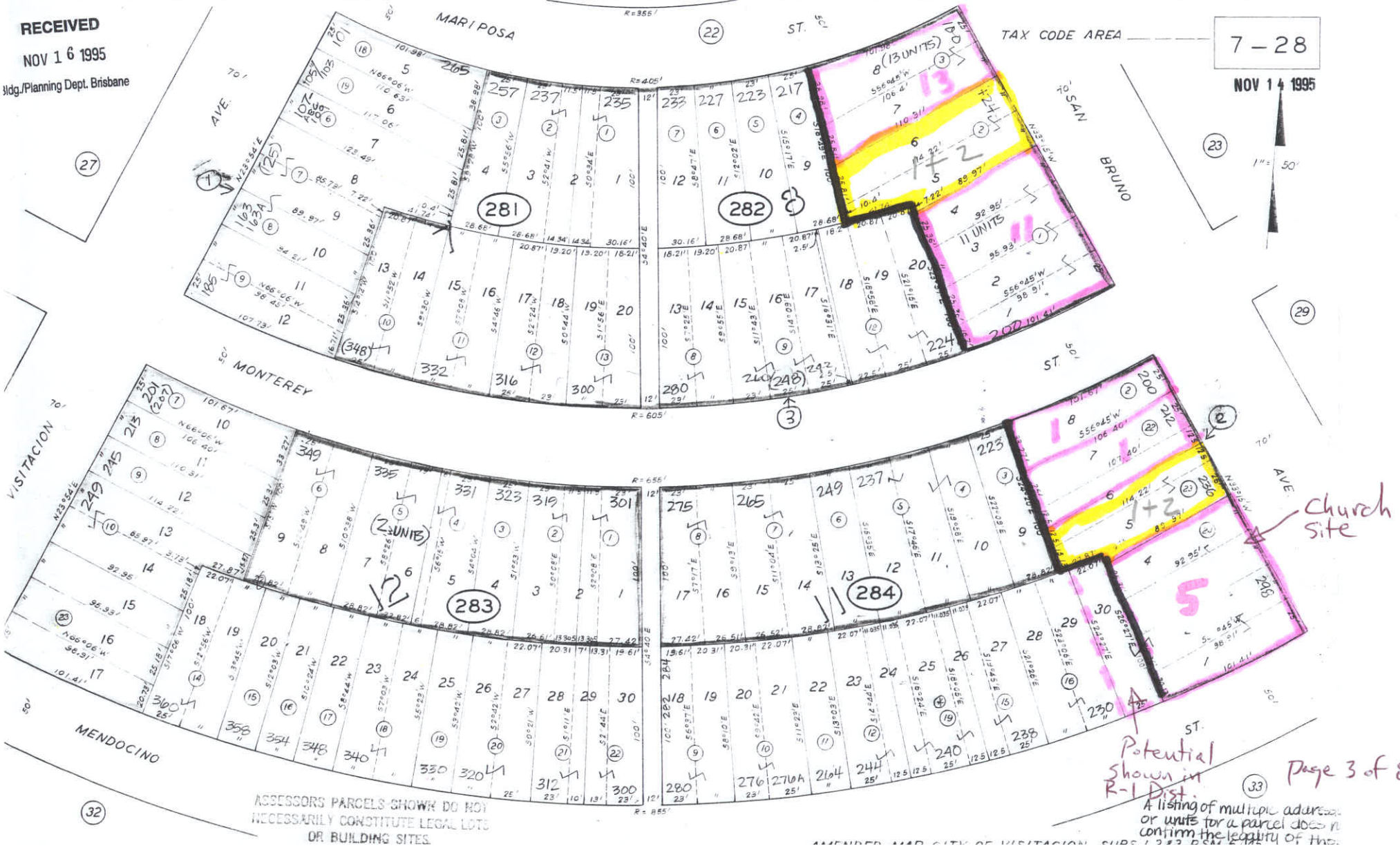
RECEIVED

NOV 16 1995

Bldg./Planning Dept. Brisbane

7-28

NOV 14 1995



ASSESSORS PARCELS SHOWN DO NOT NECESSARILY CONSTITUTE LEGAL LOTS OR BUILDING SITES.

Potential shown in R-1 Dist. A listing of multiple addresses or units for a parcel does not confirm the legality of the...

TAX CODE AREA _____

RECEIVED

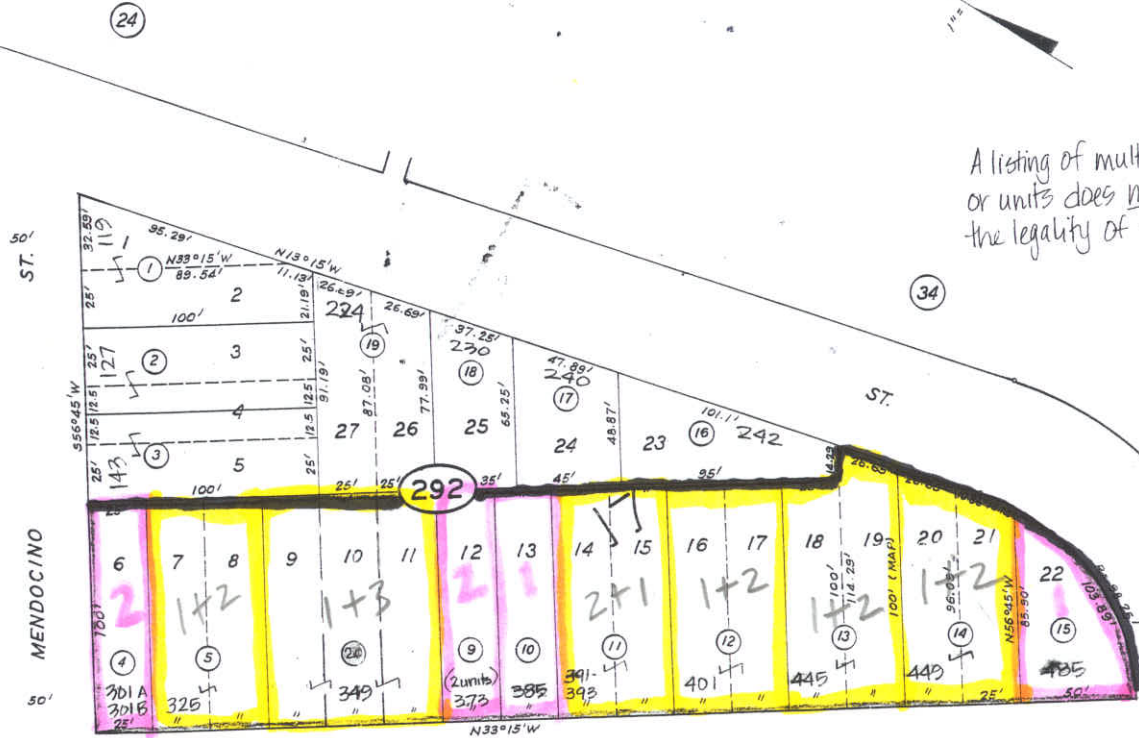
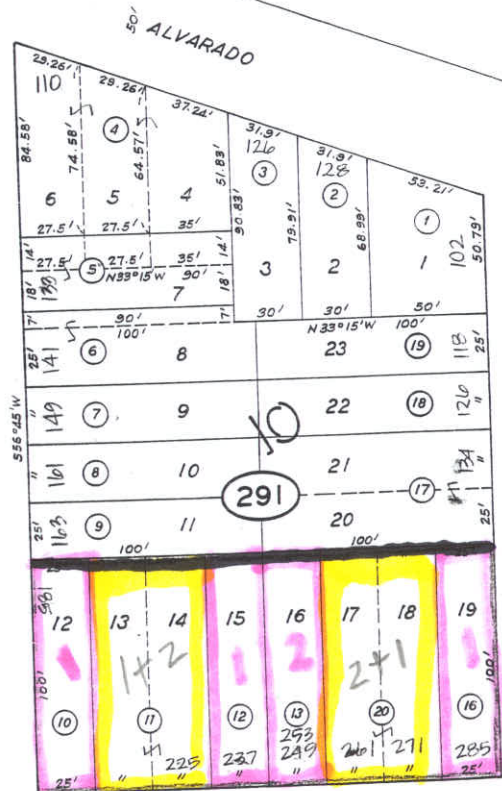
7-29

JUN 9 2004

Bldg/Planning Dept. Brisbane



A listing of multiple addresses or units does not confirm the legality of those units.



70' SAN BRUNO

AVE. 70'

KLAMATH ST.

AMENDED MAP CITY OF VISITACION SUBS 1,2 & 3 RSM 6/45

28

33