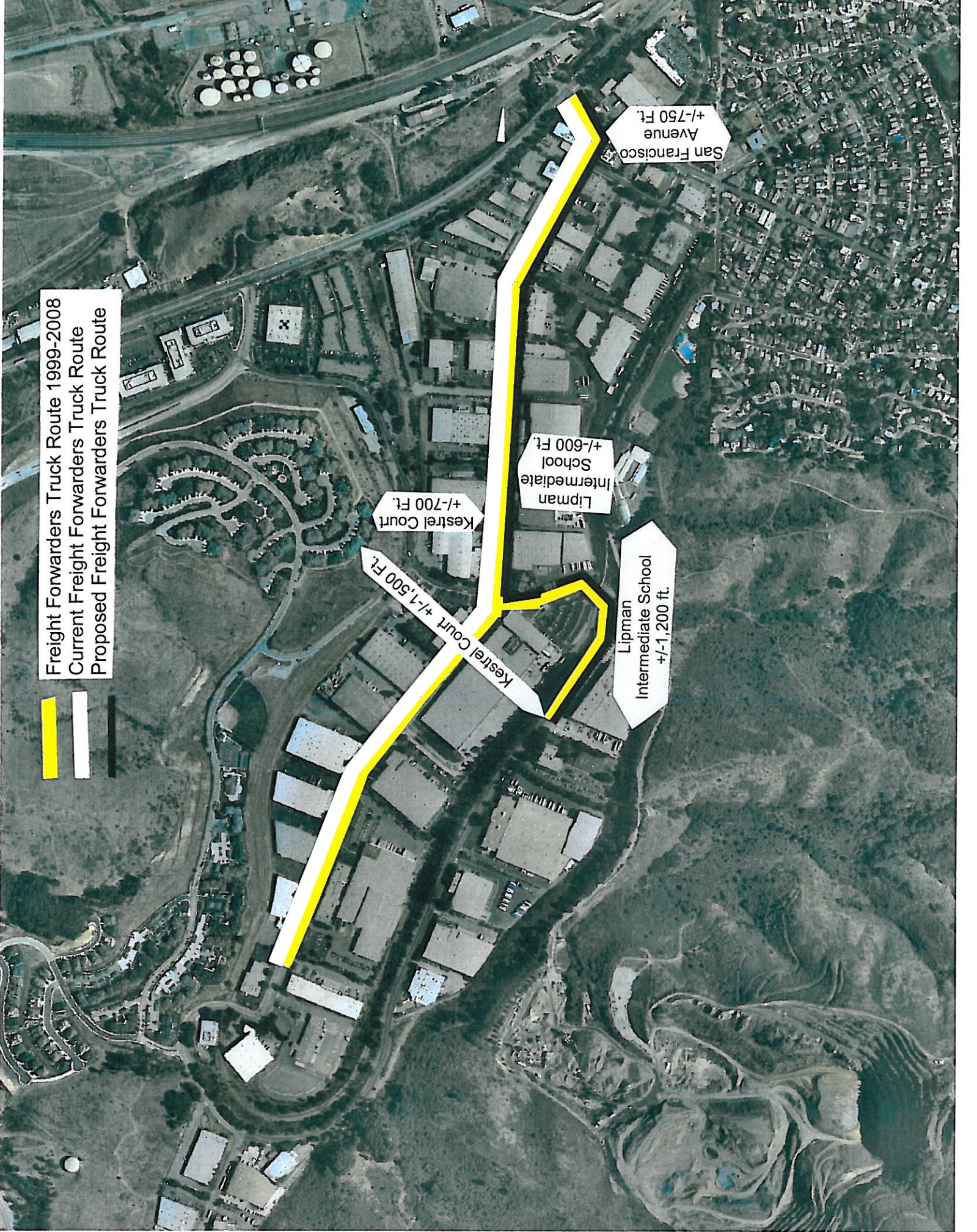


LOCATIONS AT WHICH NOISE READING WERE TAKEN  
3/16/11





Freight Forwarders Truck Route 1999-2008  
Current Freight Forwarders Truck Route  
Proposed Freight Forwarders Truck Route



San Francisco Avenue  
+/-750 Ft.

Lipman Intermediate School  
+/-600 Ft.

Kestrel Court  
+/-700 Ft.

Kestrel Court +/-1,500 Ft.

Lipman Intermediate School  
+/-1,200 ft.